

NEWSLETTER

- September, October, November 2018



Presidents Report ...

Albury Wodonga Handweavers & Spinners Guild members have been out and about in the last few weeks promoting our guild and what we do to the wider community. I would like to thank those who attended the many and varied events for the time and effort they have put in.

Jill, Jane, Ann, Pam, Vivien, Rachel and Kylie attended the "Jindera Back to " Celebrations and although the weather was cold they enjoyed the event.

Pam and Debbie attended both days of the Holbrook Quilt show and Open Gardens weekend.

Ella and Bev paid a visit to Borella House Aged Care to demonstrate and chat to the residents, while others sat by the river and enjoyed the shade at Noreuil Park.

Pam and Ella have put in two good days judging the Spinning and Weaving at the Wangaratta and Myrtleford Shows.

Robyn W, Ella, Pam, Jane and I shared a display space with Rhonda and Rod Doig and their beautiful Alpacas at the Albury Show.

Robyn, Jane, Pam and Ella attended the Albury Twilight market, which had a sustainability theme during November; by all accounts they had a good time. Mirambeena Craft Day was once again an enjoyable day out with Sue, Ann, Vivien, Ella and myself spending the day in the company of like minded crafts people.

Due to the Albury Show we were unable to use our rooms for the two weeks either side of the show. The week before some members met at Noreuil Park and the week after a few met at Kathy's home where we enjoyed the sweeping views of Albury and bottle feeding the twin lambs before calling it a day. Thanks to Kathy for making your home available to us.

Apologies if I have left anyone off the list.

Sadly our life member, Faye Hoffman, passed away after a short illness. She was a very talented Spinner and Weaver and very generously shared her knowledge with members of the guild. Faye will be missed by all.

Heather.

Another Year Gone

It has been another busy year for our Albury Wodonga Handweavers and Spinners Guild. We have welcomed new members, and farewelled old. We have shared Workshops and Retreats, attended Markets and Shows, entered and exhibited in various craft and wool shows, and it seems too soon the year is rapidly coming to a close.

To all Members, old and new, we wish you all a safe, healthy and happy festive season, and hope to see as many of you as we can back in 2019!

Committee 2017 - 2018

President:

Heather Mulqueeny
02 6024 6579

Vice President:

Debbie Carpenter
0400 612237

Minute Officer:

Joy Barnett

Secretary:

Communications/Events
T.B.A. (if interested please
contact the President)

Assistant Secretary:

Amanda Bartels
0410 475 873

Treasurer:

Ann Leonard
02 6026 2703

Assistant Treasurer:

Jane Manning

Newsletter Editor:

Kathy Wheeler
kathyw@albury.net.au
0439 696878

Library & Equipment Officer:

Robyn Cooper
0427 252 983

Public Officer:

Julie Hofer
02 6026 3835

MAIL

PO Box 629
Albury NSW 2640

EMAIL

awspinners@gmail.com

FACEBOOK

[www.facebook.com/
AWHSG](http://www.facebook.com/AWHSG)

Vale Faye Hoffman

It is with sadness that we say farewell to one of our founding Members, Faye Hoffman. Faye passed away late November after a short illness, and her presence at our regular Meetings will be greatly missed.

Faye's sister Pam supplied this insight into Faye's life from the extended family history compilation and old photos:

"Faye was born at Mansfield Hospital on 19.04.1938. She attended Barwite and Mansfield Schools then went to Melbourne to board at Korowa CEGGS. She left school to become an apprentice hairdresser in Albury. As a teenager she played polocrosse and in later years was a member of Murray Valley Hunt Club.

Faye married Graham Marshall on 19.04.1957 and lived in Holbrook where Graham was a Stock and Station agent. They also lived at Moree, Leeton and Melbourne before returning to Albury. Faye and Graham divorced in 1985.

In the 1970's Faye was President of the Albury-Wodonga Handweavers and Spinners Guild, instigating the creation of the National Woolcraft Festival. She was also instrumental in the publication of a handcraft book, the profits from which have been used to build clubrooms at the Albury Showgrounds.

In the early 80's she worked as a cook on outback safari tours where she met German born bus driver, Eddie Hoffman and married him in 1988. They commissioned a twenty passenger 4WD bus and operated a business, touring Cape York Peninsular and the Top End, specialising in barramundi fishing safaris. In the summer they took horseback trial rides to the Bogong High Plains.

They retired to live on their property near Myrtleford, growing various crops and vealers for the local market. Faye spent summers on the farm and when possible re-visited the remote northern areas of Australia during winter.

Faye and Graham adopted two children, Stephen and Jane."

I remember Faye from my own earliest days at the Guild. She was always generous with her knowledge, and we shared a love of natural dyes. I bought my first table weaving loom from Faye, and many other Members benefited from her de-stashing of all manner of things from equipment to books. Two years ago when I mentioned to Faye that I was looking for an English Leicester ram she told me she'd had one once that had succumbed to our hot Australian summers. After I purchased my ram (George), she would always ask after him every time we met, and remind me to look after him in the heat. One of our last conversations at a Guild Meeting just before she fell ill, was on the topic of Mulberry species, and what was or was not suitable for raising silk worms, another of Faye's keen interests.

I feel sure many other members will have fond memories of Faye's big heart, wealth of knowledge and generosity, and those memories will be her legacy with us.



November 1973



April 1977

Woolcraft Festival 1986
- launch of our book.

October 2018

Show & Tell - September 2018

Viv: Handmade gift cards using card templates and felt embellishments

Bev: Spun wool

Debbie: Variety dyed wool, silk and muslin, solar dyed wool with onion skins/madder, string bag.

Faye: Woven sleeveless coat

Robyn C: Beanie

Loraine: Purple rug

Julie: "Wicking" herb garden

Kylie: Knitted Cardigan (felting yarn), felted silk scarf

Pam: Green scarf and Sashiko embroidery.



Show & Tell - October

Ella: Home spun merino silk – black bean dyed Method shared next newsletter

Bev: Bobbin Lace Xmas bell decoration

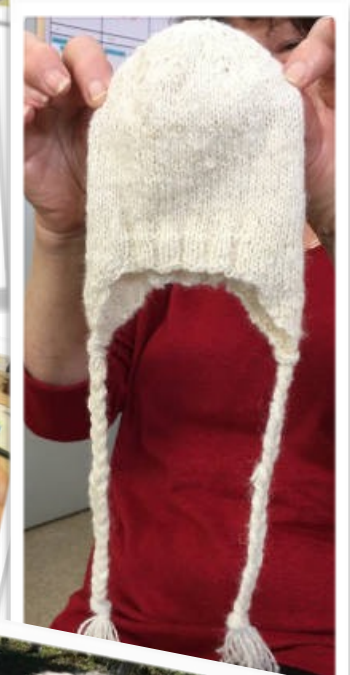
Debbie: Knitted beaded shawl (wool from craft alive), Storage box – various colours pin loom squares

Faye: Knitted baby hats

Chris: Baby hat knitted from hand spun wool

Kathy Wheeler: Proud mother of 5 new English Leicester Sheep

Kylie: Crochet mauve and gold shawl

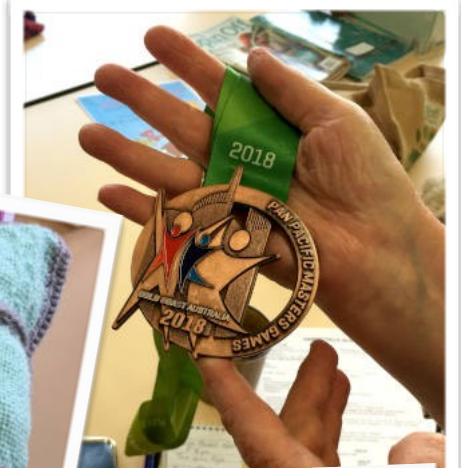


Show & Tell November

Ann proudly showed off her Bronze medal for netball from the Pan Pacific Masters games in Qld.

Rhonda had completed a lovely pin loom cushion, using different patterns in each square.

Jane has been busy as a beaver and could only show us a photo of a shawl she sold at the twilight market last week (the one on the front cover of the recent Spin off Magazine). Also she had two lace, hand spun and knitted wraps, one blues and reds of Merino/silk and the other hand dyed and Navaho plied alpaca in hippy colors of pink/purple/yellow.



Jane has also completed a magnificent king size blanket, hand woven in shades of blues, she made strips and stitched them together.



Success at the Royal Melbourne Show 2018

After encouragement from Heather, I was persuaded to enter my prize winning Bendigo Sheep Wool Show pieces in the Royal Melbourne Show. The Royal Melbourne does not have as many categories for felting as Bendigo, so options were limited and competition strong.

Still, the needle felted Budgies, *Waterhole II - Murmuration*, won First Place in it's category, and *In Memory* won Second Place against a truly worthy entry.

In Memory has some special personal significance and a story to tell of both loss and celebration. Ethel Stephenson, portrayed in *Memory*, has been the doyenne breeder of English Leicester sheep in Australia. She ran a flock of over 100 English Leicester on a beautiful property near Benalla, Victoria.

Ethel was also an early member and strong supporter of the English Leicester Association of Australia. She was also a founding member of the Black and Coloured Sheep Breeders Association as well as Heritage Sheep Australia. Ethel was also involved in the Handweavers and Spinners Guild of Victoria, Collingwood Children's Farm, Benalla Rose Garden and the Benalla Art Gallery.

Ethel retired from her flock in 2015, and passed away peacefully on the 26th May 2018 at 92 years of age.

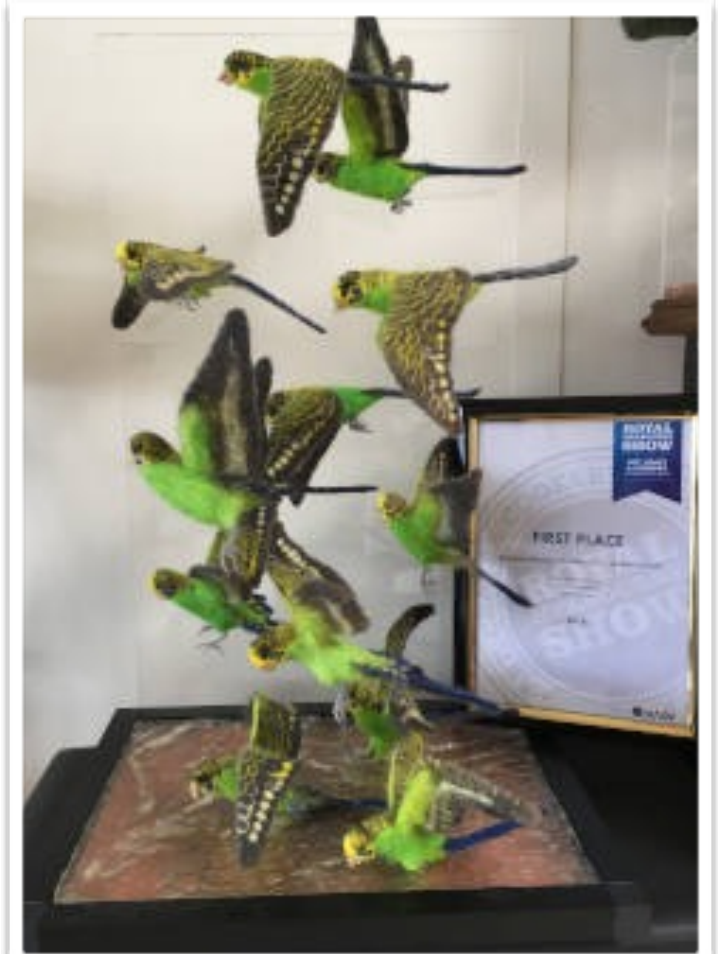
"The Shepherdess is now at rest".

Roman the English Leicester ewe depicted in *Memory* was so named because of the growth that deformed her muzzle and eventually stole her life. She was one of my foundation ewes, purchased from Ethel Stephenson's herd dispersal sale.

A gentle creature with beautiful fleece, I promised her I would make something special with her last fleece.

In Memory and *Murmuration*, both pieces made from her fleece, are tributes to Roman, and the legendary Ethel Stephenson, her breeder.

Kathy Wheeler.



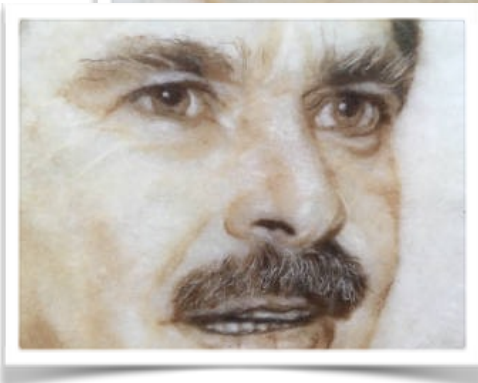
Road Trip to Lockhart

While our Guild Rooms were closed for the Albury Show, I took the opportunity to make a trip to see the works of Doris Golder.

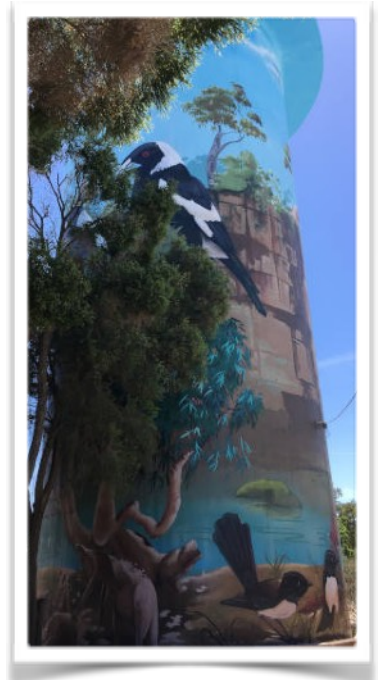
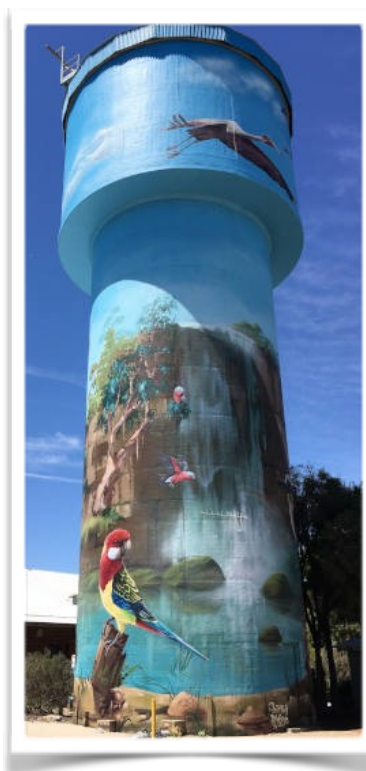
Doris (now retired) is a wool artist I'd heard and read about. I'd seen photographs on-line of her work now hanging in the Doris Golder Wool Art Gallery in Lockhart (<http://visitlockhartshire.com.au/art/doris-golder-gallery.aspx>). So on the Wednesday of Guild instead of heading to our usual Show alternate site to spin by the River at Nouriel Park, or our return invitation to visit Borella House, Rachael and I headed north west to Lockhart.

The Gallery was fascinating, although perhaps I was more interested in Doris' techniques than the works themselves. Doris paid a great deal of attention to detail, and it shows. Her works are close to photo quality, made more amazing by the knowledge that she did not use felting techniques or glue apart from the base background. Instead she built her images up with careful placement of layers of naturally coloured fleece, always working under glass.

The detail achieved right down to the placement of individual strands of wool are impressive. Her patience must have been amazing!



Then upon leaving the Gallery we discovered more of the gems Lockhart has to show. Metal sculptures adorn the town, and the old water tower has been painted with the most vibrant mural of the local native bird life.



A thoroughly enjoyable and surprising outing.
Kathy Wheeler.

Antibacterial properties of fleece

Sheep's wool has long had a reputation for antibacterial and antimicrobial properties. The thin waxy coating of wool fibre contains fatty acids that inhibit the growth of mould, mildew and bacteria. This means that woollen items do not need regular washing and will smell fresh after repeated use, unlike synthetic fibres. And now alpaca fibre is joining the list of naturally antibacterial fibres:



Alpaca Owners Association (USA) Documents Antimicrobial Properties Of Raw Alpaca Fiber.

LINCOLN, Neb. — December 3, 2018 — Alpaca Owners Association (AOA) announced recent laboratory testing results revealed that raw alpaca fiber possesses antibacterial properties.

“While the effect is modest, it is likely comparable to the natural antibacterial properties of scoured sheep’s wool,” said Bud Synhorst, Executive Director of AOA. “This will increase the interest of alpaca fiber within the active apparel industry.”

The outdoor and sports apparel industry has seen increased interest in antimicrobial textile products from active consumers who want products that are odor resistant. The industry has largely addressed this demand by treating fabrics with chemicals that inhibit bacterial growth.

While highly effective at suppressing bacteria on the garments short term, Synhorst noted that in most cases those chemicals are lost over time as the garment is used and washed, resulting in a loss of antibacterial effect. This has led some market observers to raise environmental concerns regarding the resulting presence of the chemicals in water and soil.

By contrast, the antibacterial properties of the keratin component of animal fibers, including alpaca, are a more natural and durable alternative to chemical treatment.

“This is another reason that high-quality animal fiber textiles remain in demand,” he said. “They can be a good fit for consumers looking for durable clothing that is grown and manufactured in ways that are sensitive to the long-term health of the environment.”

Posted December 3, 2018. Source: Alpaca Owners Association, Inc. (AOA)



For Sale:

Ashford Traditional Spinning Wheel in very good condition. The wheel comes with 3 bobbins, a lazy Kate and a niddy-noddy. Ph.: Heather 0407529062. \$200 (or best offer).

Albury Wodonga Handweavers and Spinners Guild Program - December, 2018 to February 2019

Please note: Workshops are a Work In Progress - watch your Guild emails for notifications.

December 12	Business Meeting Last meeting for the year, followed by a shared Christmas Morning Tea.
February 6	Return for 2019



A Hooker Poem

My wife is a hooker,
Of this she's mighty proud,
And the stories of her exploits,
Are legends in our town.
She's shameless with her talents,
She'll go hooking anywhere,
And if people want to watch her,
She really doesn't care.
It seems to be a family thing,
Her mother taught her how.
Seems her grandma was a hooker,
and my daughter's hooking now.
She goes to Hookers' meetings,
to learn the new techniques.
She starts hooking in a frenzy,
and won't talk to me for weeks.
She doesn't do the housework,
She doesn't make the beds,
No she doesn't have time for that,
She'd rather hook instead.
My wife, she is a hooker,
and I curse that awful day,
when she first picked up the hook and yarn,
and learned how to Crochet!!
~Lee

www.dearestdebi.com



*Wishing all our readers a Happy &
Safe Christmas and New Year!*